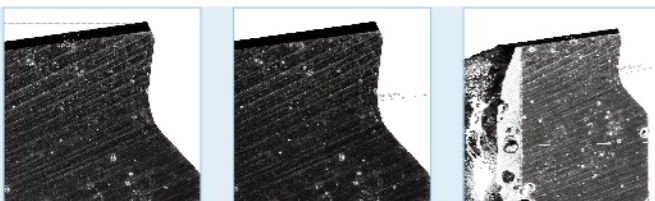


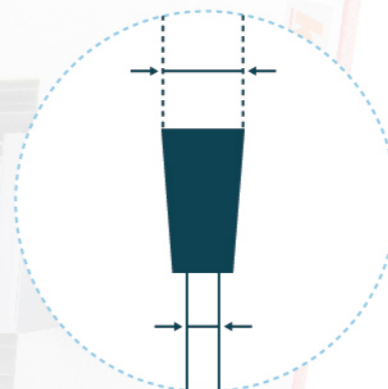
TOP LENS



上
鏡頭

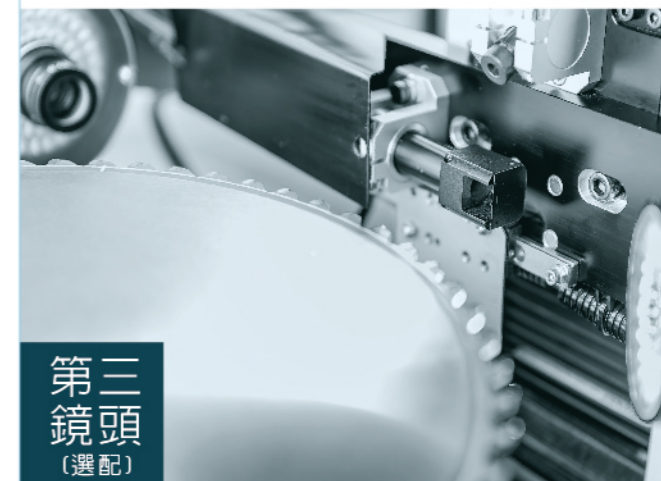


A Perfect Exhibition of Accuracy and Quality
精密與品質的完美展現

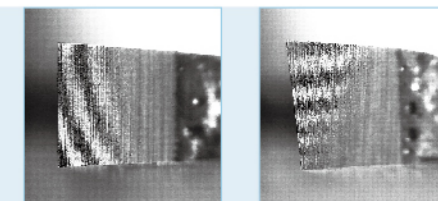


THIRD LENS

(Opt.)



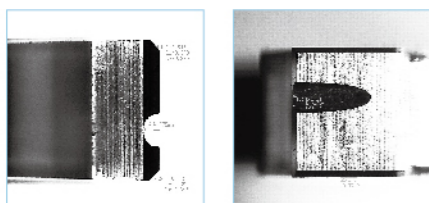
第三
鏡頭
(選配)



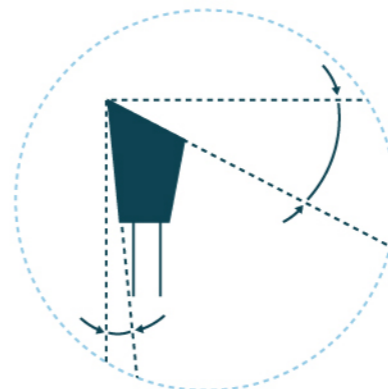
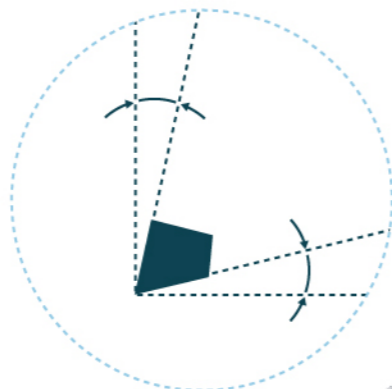
SIDE LENS



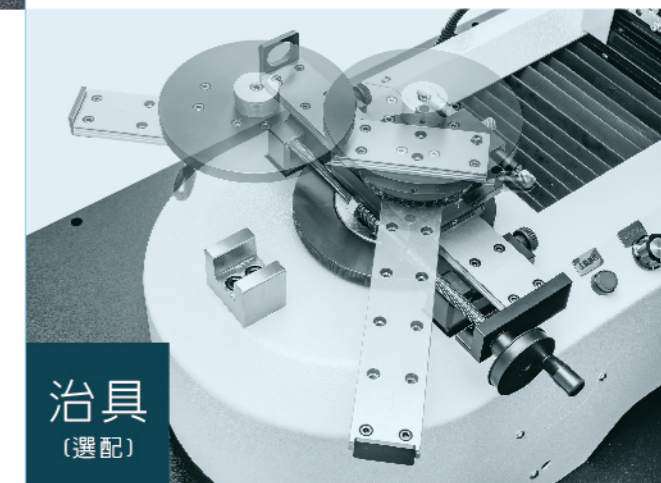
側
鏡頭



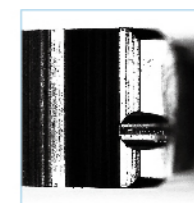
Clear View
Nothing to Hide



JIG (Opt.)



治具
(選配)



一覽無遺 無法遁形

BJ-103

Automatic Angle Rotation, Indexing and Positioning, Automatic Inspection



軟體功能

SOFTWARE FUNCTIONS

自動角度旋轉
分割定位
自動量測

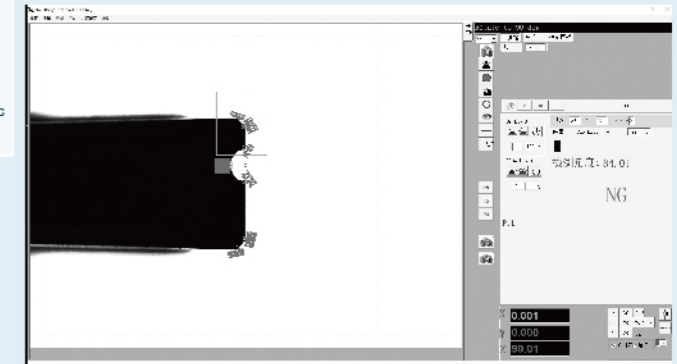
1. 路徑規劃

PATH PLANNING

Name	量測類型	量測單位
圓溝深-Groove depth	LN	S
圓溝寬-Groove width	LN	S
刃寬-Blade width	LN	I
上倒角寬-Chamfer1	LN	S
下倒角寬-Chamfer2	LN	S
L1	ΔI	S
L2	ΔH	S
MOTOR	MOTOR	5000
圓溝深-Groove depth	LN	S
圓溝寬-Groove width	LN	S
刃寬-Blade width	LN	I
上倒角寬-Chamfer1	LN	S
下倒角寬-Chamfer2	LN	S
L1	ΔI	S
L2	ΔH	S
MOTOR	MOTOR	12000
LOOPS	LOOPS	30

2. 完成錄製巨集

TO FINISH RECORD MACRO
(Generate Automatic Programs)



4. 量測報表

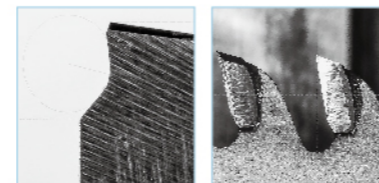
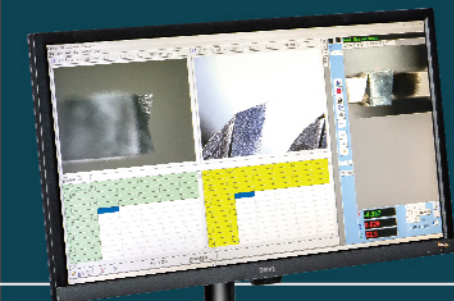
DATA CSV

量測項目	量測值	單位	公差	判定
圓溝深	0.15	mm	±0.01	OK
圓溝寬	1.2	mm	±0.02	OK
刃寬	1.5	mm	±0.02	OK
上倒角寬	0.5	mm	±0.02	OK
下倒角寬	0.5	mm	±0.02	OK
L1	0.1	mm	±0.01	OK
L2	0.2	mm	±0.01	OK

3. 開始自動量測

START AUTOMATIC INSPECTION

AUTO SAWBLADE INSPECTION SYSTEM



角度 圓弧 跳動
刃寬 溝樑 量測

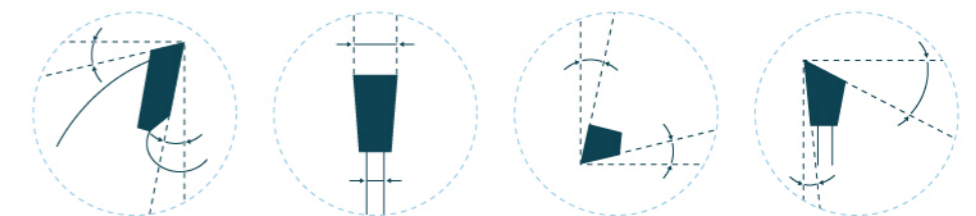
Angle Radius Skip
Tooth Width and Groove Inspection

特性:

- 立臥雙軸觀察齒形
- X/Y軸手輪調整
- 簡易觀察
- 三鏡頭
- X/Y軸手輪旋轉軸
- C軸自動旋轉軸
- C軸角度自動分割
- C軸角度自動定位

FEATURES:

- Tooth shape inspection on two axes (Horizontal and vertical)
- X/Y axis adjustment by handwheels
- Easy to observe
- Three lenses
- Handwheel rotating axis
- C axis automatic rotating
- C axis automatic indexing
- C axis automatic positioning



BJ-103 自動鋸片量測機

型式	MODEL	BJ-103
C軸主軸自動控制	Automatic Spindle Control on C axis	
水平距離	Horizontal Distance	30 ~ 300 mm
垂直距離	Vertical Distance	90 mm
鋸片直徑	Sawblade Diameter	Ø60 ~ Ø600 mm
最小讀數	Least Reading Unit	1 μm
側鏡頭倍率	Side Lens Magnification	15x ~ 100x
上鏡頭倍率	Top Lens Magnification	35x ~ 200x
第三鏡頭倍率(選配)	Third Lens Magnification (Opt.)	50x
第三鏡頭專用(表面光)(選配)	For Third Lens (Surface Light) (Opt.)	1
螢幕	Monitor	24" x 1
表面光	Surface Light	2
背光	Backlight	2
PC	PC	1
鋸片專用治具(選配)	Jig for Sawblade (Opt.)	1

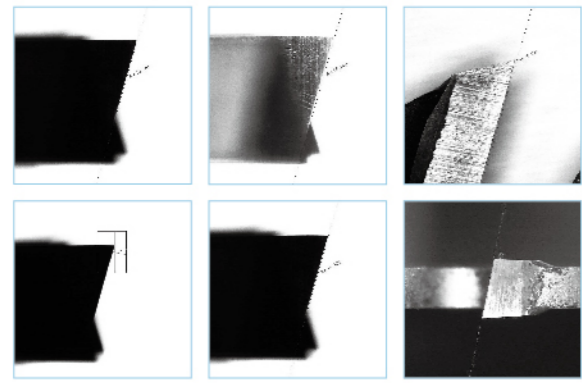


SAWBLADE INSPECTION SYSTEM



BJ-102 鋸片量測機

型式	MODEL	BJ-102
水平距離	Horizontal Distance	30 ~ 300 mm
垂直距離	Vertical Distance	90 mm
鋸片直徑	Sawblade Diameter	Ø60 ~ Ø600 mm
最小讀數	Least Reading Unit	1 μm
側鏡頭倍率	Side Lens Magnification	15x ~ 100x
上鏡頭倍率	Top Lens Magnification	35x ~ 200x
第三鏡頭倍率(選配)	Third Lens Magnification (Opt.)	50x
第三鏡頭專用(表面光)(選配)	For Third Lens (Surface Light) (Opt.)	1
螢幕	Monitor	24" x 1
表面光	Surface Light	2
背光	Backlight	2
PC	PC	1
鋸片專用治具(選配)	Jig for Sawblade (Opt.)	1



- 特性:
- 手輪調整X/Y軸鏡頭
 - 旋轉軸手輪調整
 - 精密結構設計
 - 量測精準
 - 具電腦軟體量測功能

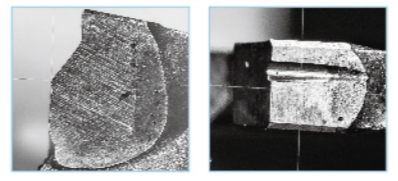
- FEATURES:
- Handwheel adjustment for for X / Y axis
 - Handwheel adjustment for rotating axis
 - High precision structure design
 - Accurate inspection
 - Inspection function through computer software

SAWBLADE INSPECTION SYSTEM



BJ-101 鋸片量測機

型式	MODEL	BJ-101
水平距離	Horizontal Distance	30 ~ 300 mm
垂直距離	Vertical Distance	50 mm
鋸片直徑	Sawblade Diameter	Ø60 ~ Ø400 mm
側鏡頭倍率	Side Lens Magnification	35x ~ 200x
上鏡頭倍率	Top Lens Magnification	35x ~ 200x
螢幕	Monitor	24" x 2
表面光	Surface Light	2
工作桌(選配)	Work Table (Opt.)	L:1100 W:600 H:700



- 特性:
- 簡易結構設計
 - X/Y軸手動調整
 - 標配雙螢幕
 - 可同時觀察正面與側面齒形
 - 簡易觀察功能
 - 簡易量測功能選配
 - 雙鏡頭
 - 工作桌為選配

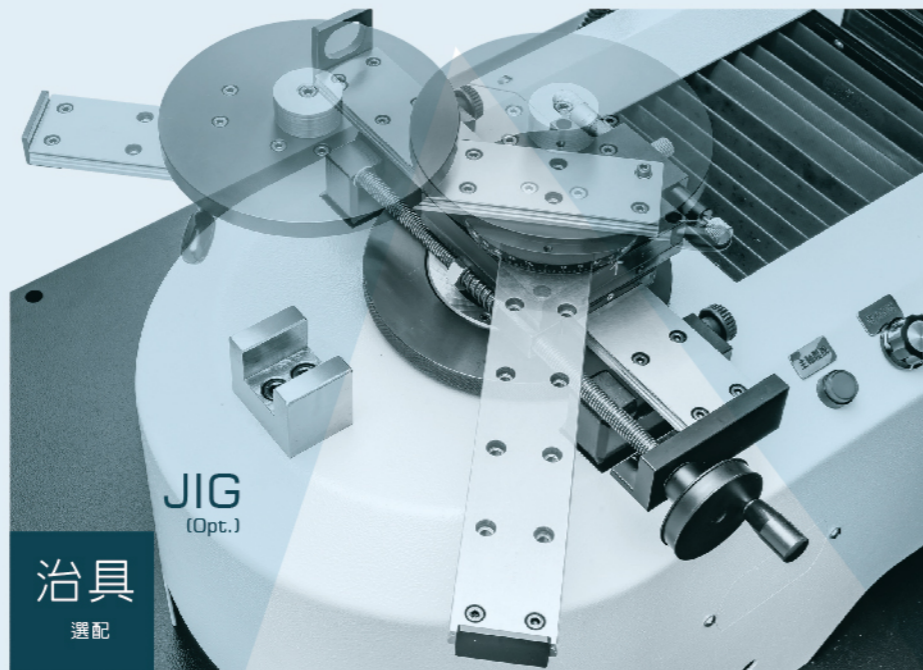
- FEATURES:
- Simple structure design
 - Manual adjustment for X / Y axis
 - Twin monitors are standard equipment
 - Inspect front and side tooth shape simultaneously
 - Simple observation function
 - Simple inspection function (Optional)
 - Twin lenses
 - Work table is optional

- 工作桌(選配)
- Work Table (Opt.)



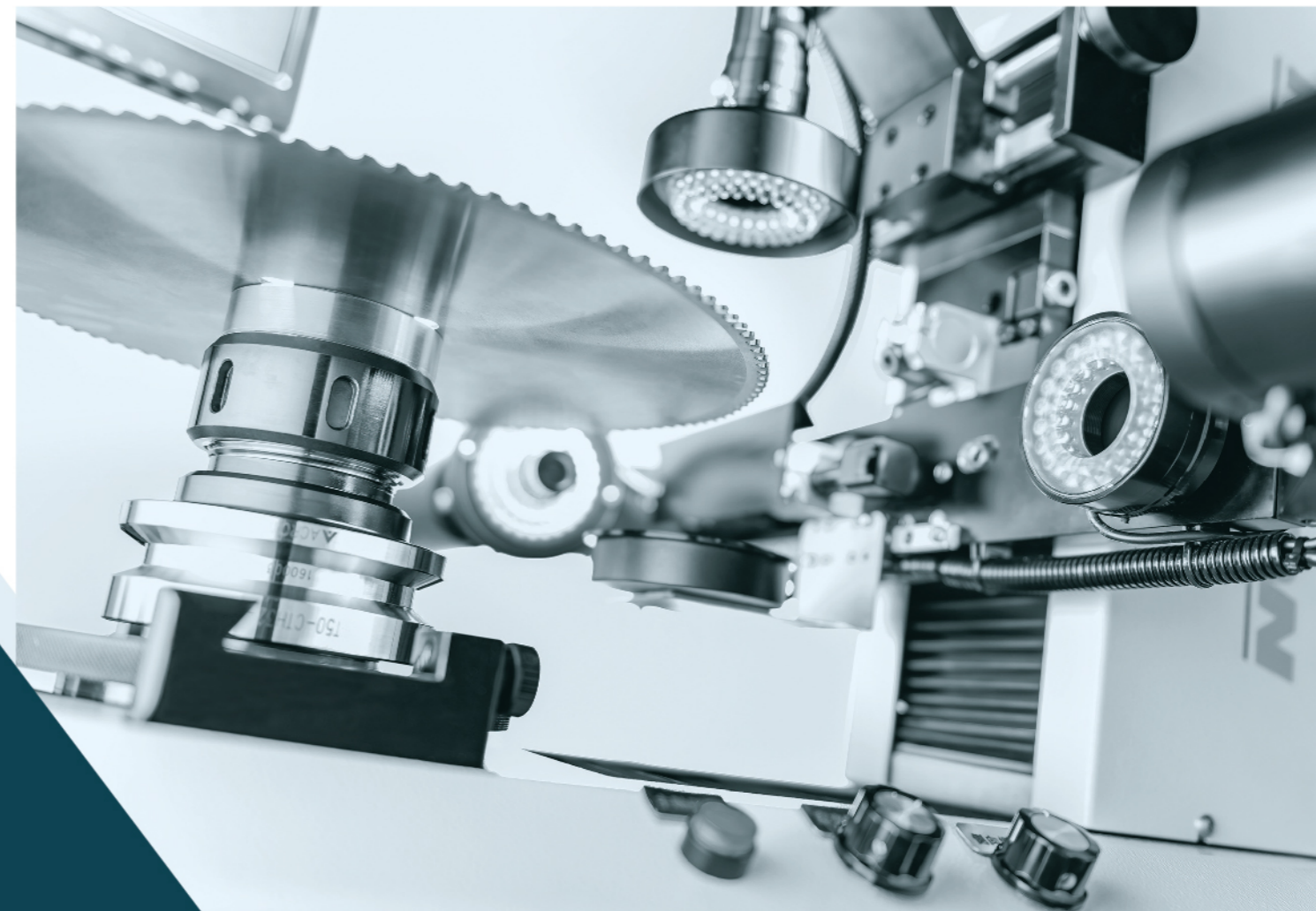
EXPANSION
SHAFT
(Opt.)

膨脹
軸
選配



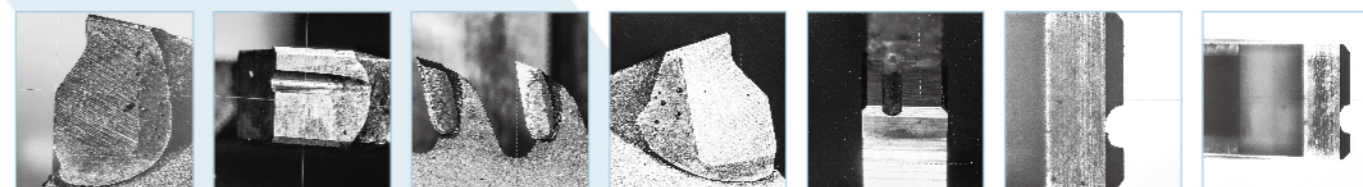
JIG
(Opt.)

治具
選配



SAWBLADE

鋸片量測機 INSPECTION SYSTEM



KEEJAAN **BIG JUMP**
KEEJAAN MACHINERY CO., LTD.

No. 20, Ln. 216, Sec. 5, Fengyuan Blvd., Fengyuan Dist., Taichung City 420, Taiwan. 420 台中市豐原區豐原大道五段216巷20號

TEL: +886-4-25381409、25380514 FAX: +886-4-25364523

E-mail: keejaan@ms47.hinet.net http://www.keejaan.com

 可展機械股份有限公司
www.keejaan.com

BIG JUMP **KEEJAAN**