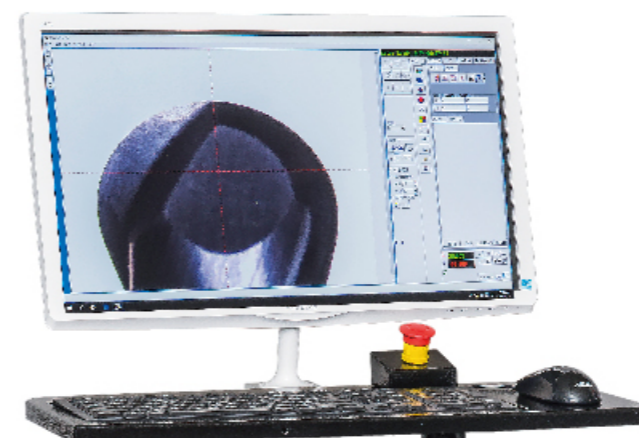
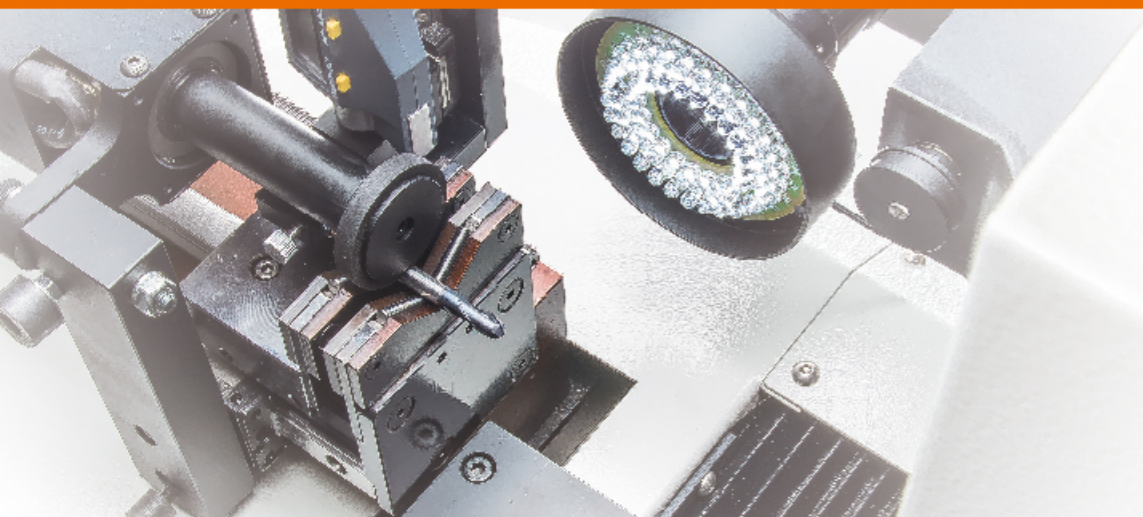


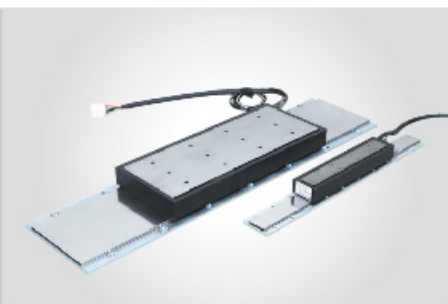
FULLY AUTOMATION, MORE EASY OPERATION
全自動更簡單容易操作

KJ KEEJAAN



KJ-102A *PLUS*

High position accuracy 高定位精度



X / Y AXIS YASKAWA LINEAR MOTOR DRIVE
X / Y axis are driven by YASKAWA linear servo motors providing fast motions and high positioning accuracy.

X / Y 軸安川線性馬達驅動
X / Y 軸採用安川線性馬達驅動，動作快速，定位精準。

適用各種刀具檢測及圖像分析
適用於雕刻刀、球刀、圓鼻刀、絞刀及一般銑刀的輪廓、角度、圓弧的檢測及圖像分析

MACHINE SIZE / 機器尺寸
L: 1200 mm
W: 850 mm
H: 1400 mm

GROSS WEIGHT / 機器重量
282 kg

SUITABLE FOR TOOL INSPECTION AND IMAGE ANALYSIS
Designed for inspecting contour, angle and radius and analyzing image for various tools, such as engraving tools, ball end mills, corner radius mills and general milling cutters.

AUTOMATIC
TOOL IMAGE INSPECTION SYSTEM

自動刀具量測步驟

進入DXF檔案畫面

Enter Into
the Display of DXF File

自動指定路徑

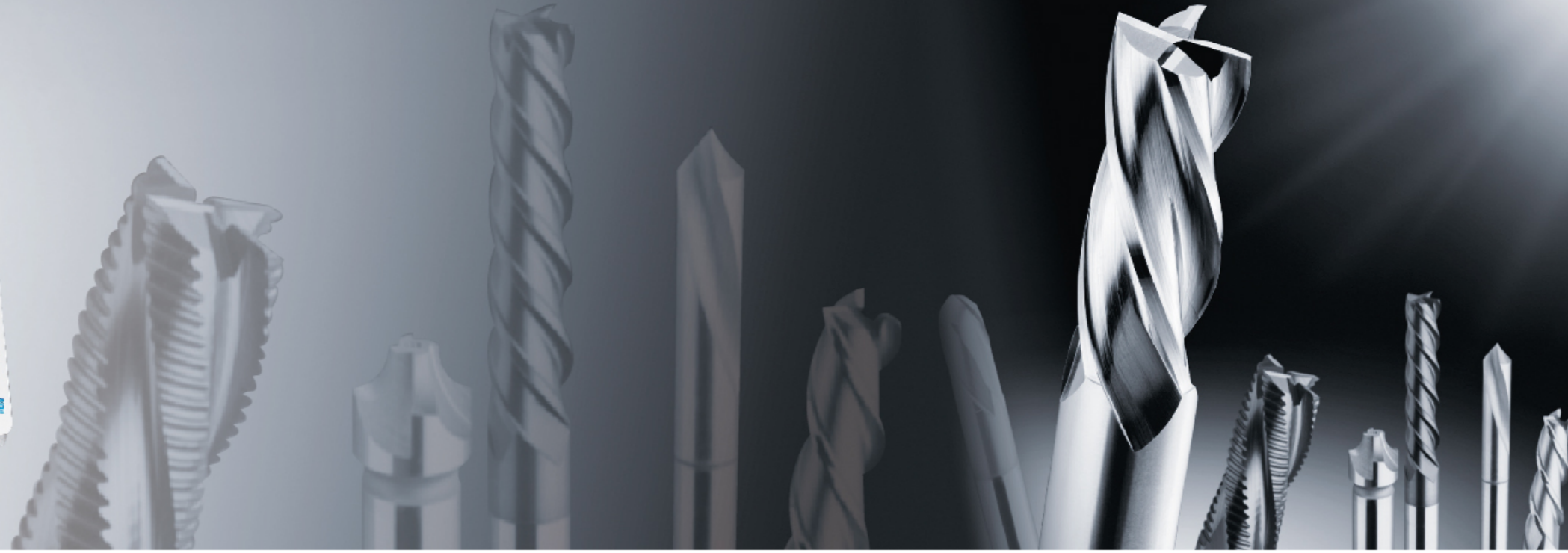
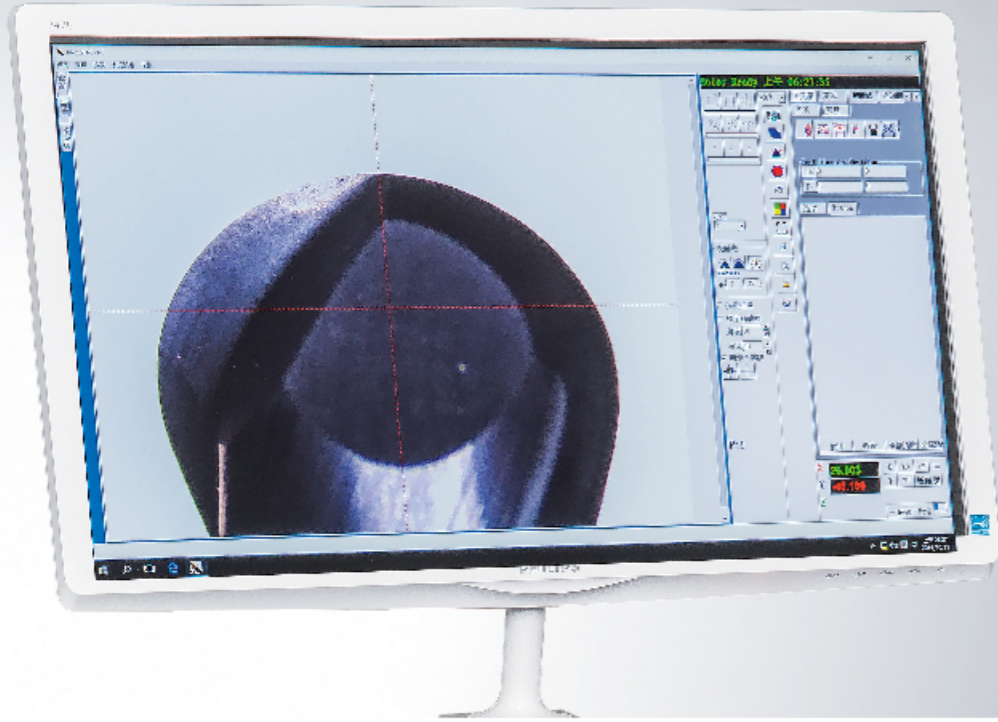
Automatically
Designate Path

X/Y軸自動弧取刀具輪廓

X / Y axis Automatically
Define Tool Contour

按「執行」鍵即可自動量測刀具

Press the " exec " key
to automatically
Conduct tool Measurement

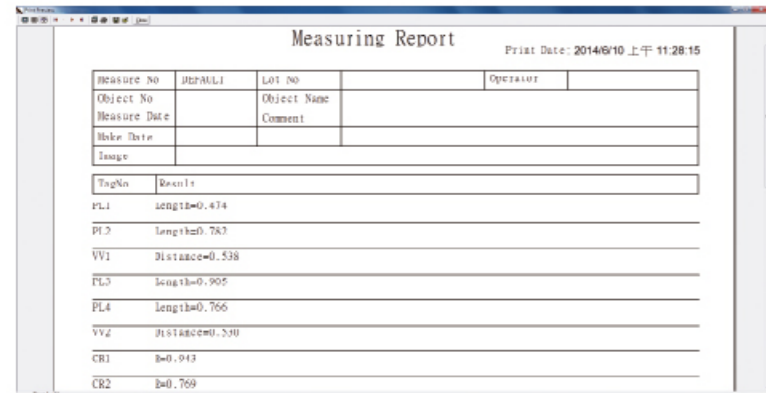


操作界面 清晰易懂

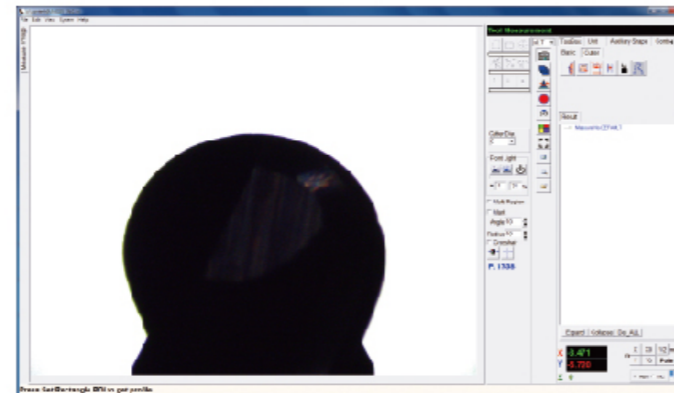
簡單易懂易學的軟體操作界面設計，使用者只需輕觸按鍵，就可執行快速、簡易的刀具量測及報表。

EASY-TO-UNDERSTAND OPERATIONAL INTERFACE

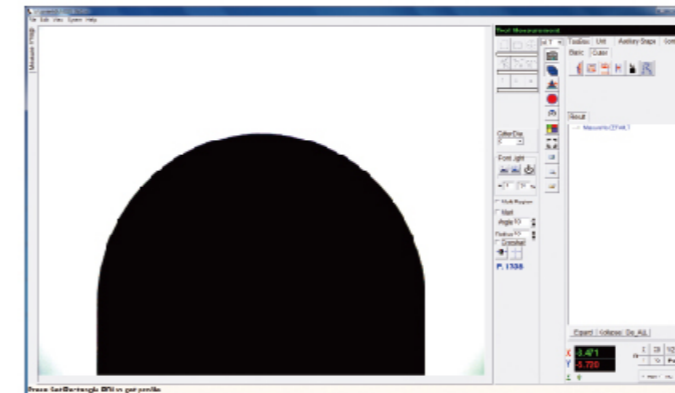
Simple and easy-to-understand operational interface. The operator only needs to press keys for fast and easily executing tool measurement and report forms.



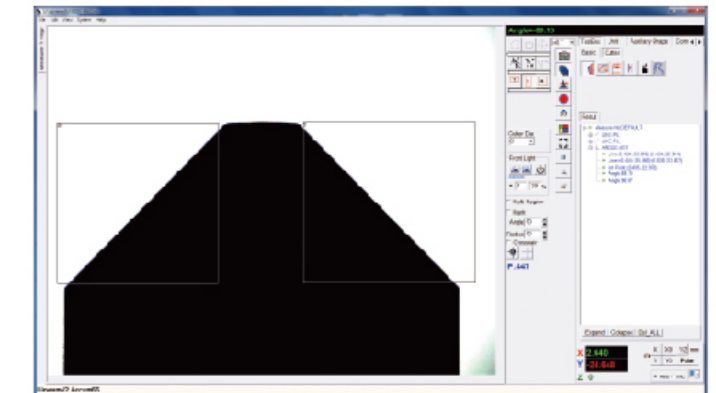
尺寸表品檢報表
SIZE INSPECTION REPORT FORM



影像記憶 (開始)
IMAGE MEMORY (START)



影像記憶 (完成)
IMAGE MEMORY (FINISH)

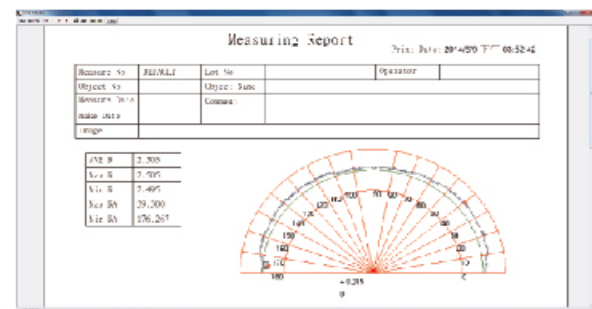


角度量測
ANGLE MEASUREMENT

自動化刀刃量測 自動擷取影像，讓刀具量測更快速、精準。

AUTOMATIC CUTTER EDGE MEASUREMENT

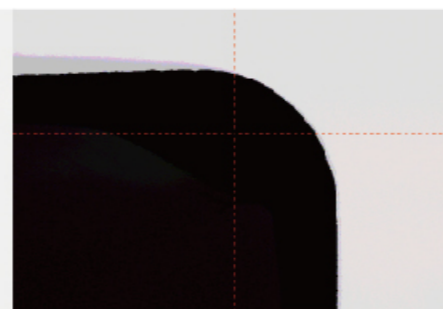
Automatically defining image makes tool measurement faster and more accurate.



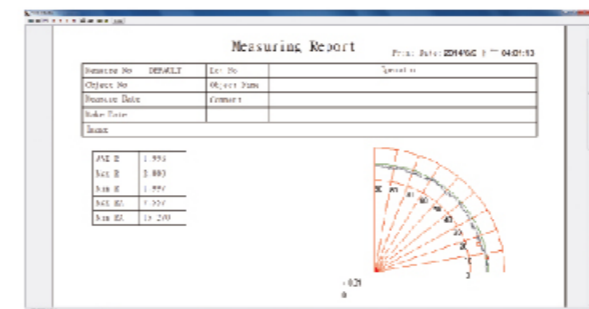
球頭刀報表
REPORT FORM FOR BALL END MILL



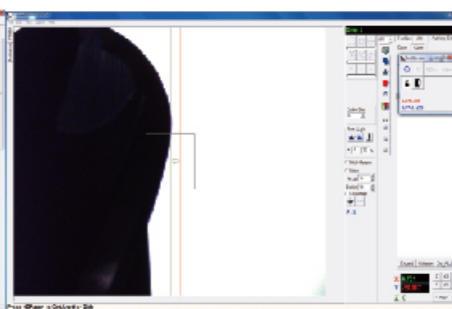
球頭刀
BALL END MILL



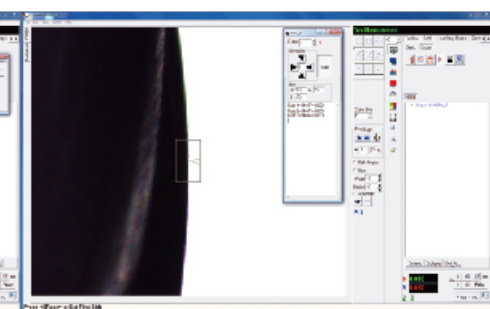
圓鼻刀
CORNER RADIUS MILL



圓鼻刀報表
REPORT FORM FOR CORNER RADIUS MIEEDGE DIAMETER



刃徑



刃跳動
EDGE JUMP



MACHINE SIZE / 機器尺寸

L: 1200 mm

W: 850 mm

H: 1400 mm

GROSS WEIGHT / 機器重量

262 kg



POSITIONING AS DESIRED

All positions of window port, image and projecting light can be independently adjusted.

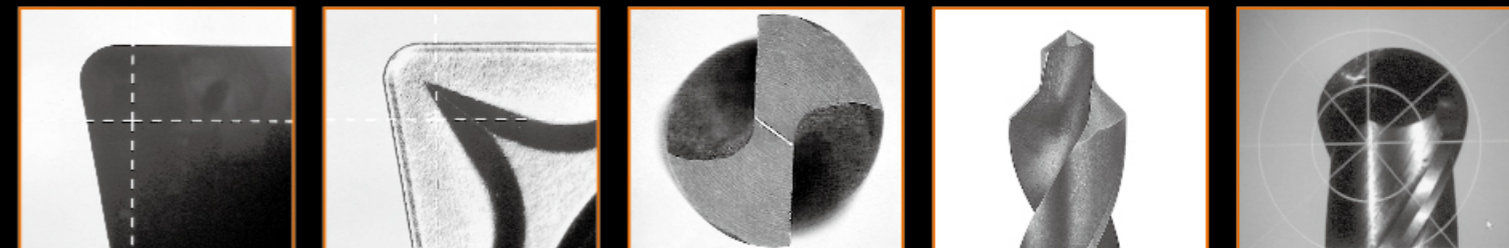
定位随心所欲 窗口、影像位置及照射燈之位置，均可分別調整定位。

KJ-102A

TOOL IMAGE INSPECTION SYSTEM
刀具影像量測儀

SUITABLE FOR TOOL INSPECTION AND IMAGE ANALYSIS

Designed for inspecting contour, angle and radius and analyzing image for various tools, such as engraving tools, ball end mills, corner radius mills and general milling cutters.

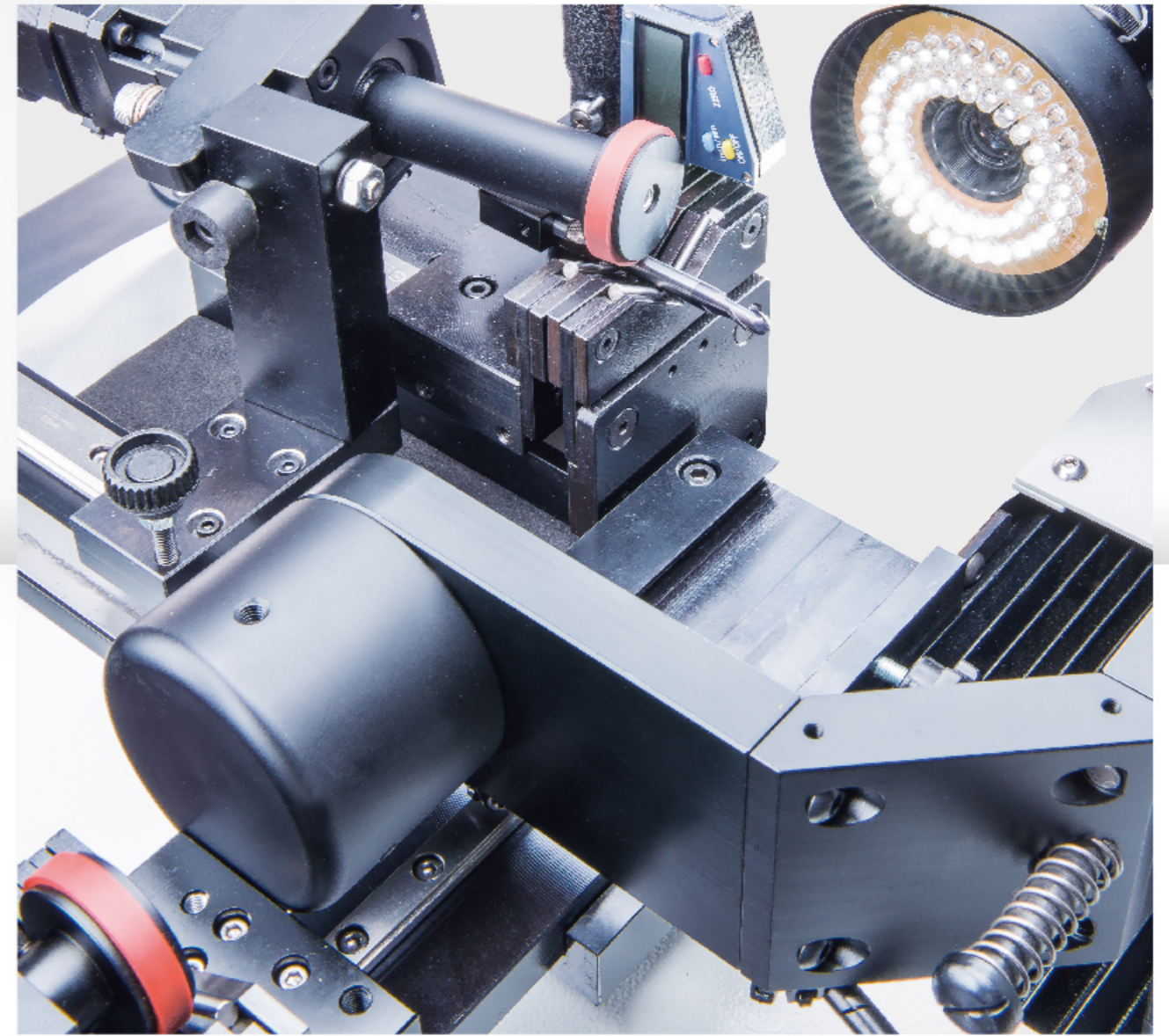
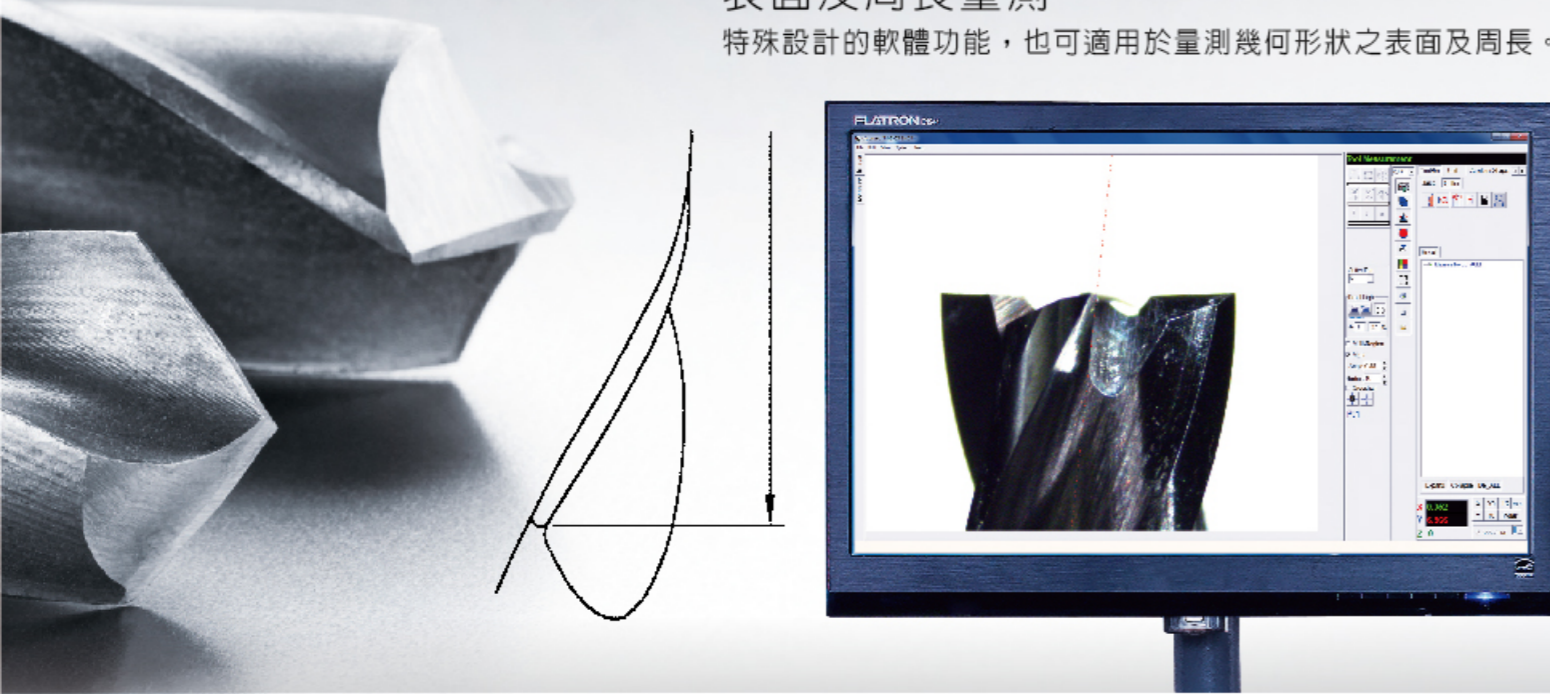


適用各種刀具檢測及圖像分析

適用於雕刻刀、球刀、圓鼻刀、絞刀及一般銑刀的輪廓、角度、圓弧的檢測及圖像分析

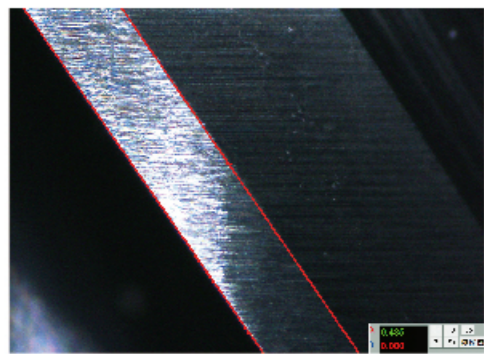
表面及周長量測

特殊設計的軟體功能，也可適用於量測幾何形狀之表面及周長。

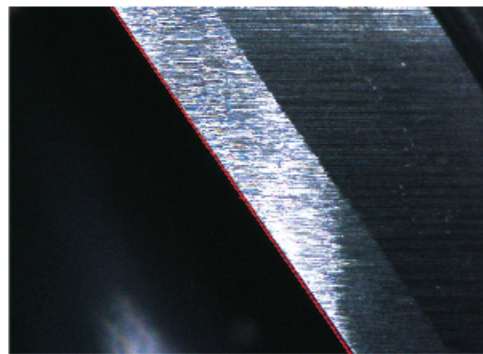


SURFACE AND CIRCUMFERENCE LENGTH MEASUREMENT

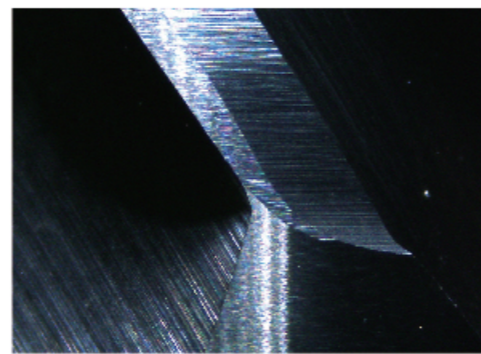
With the specially designed software function, the geometric shapes such as surface and circumference length can be measured.



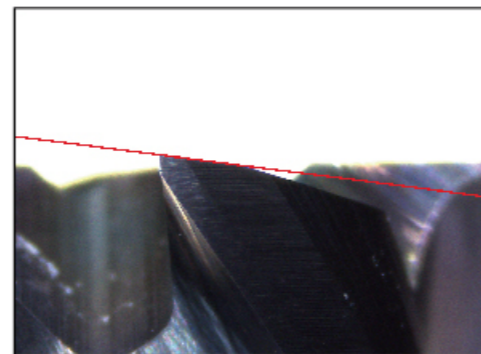
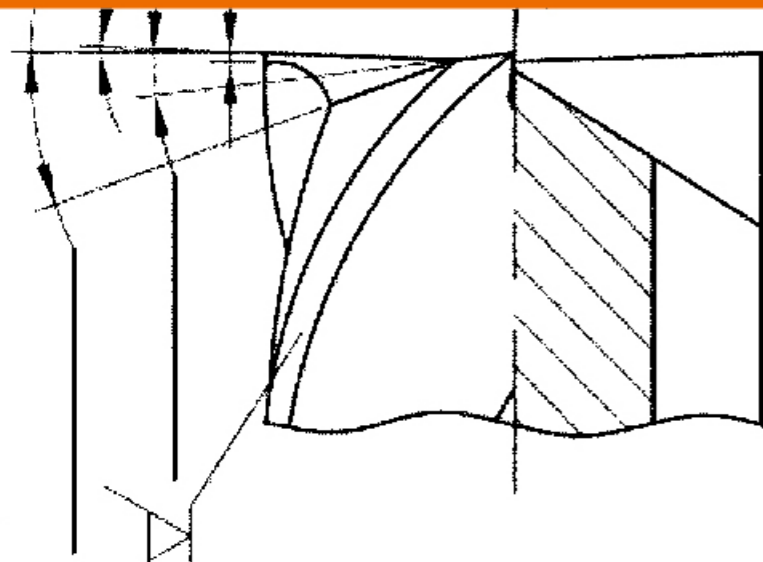
刃寬
EDGE WIDTH



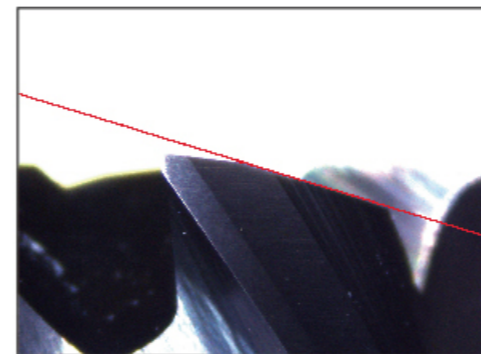
螺旋角
HELIX ANGLE



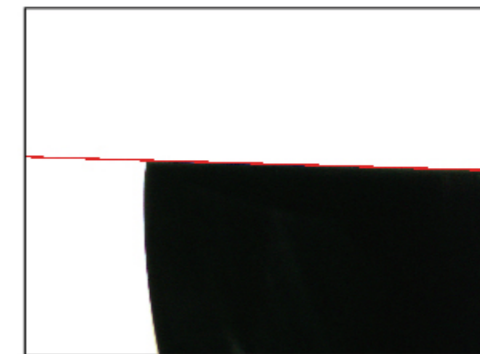
刃長
EDGE LENGTH



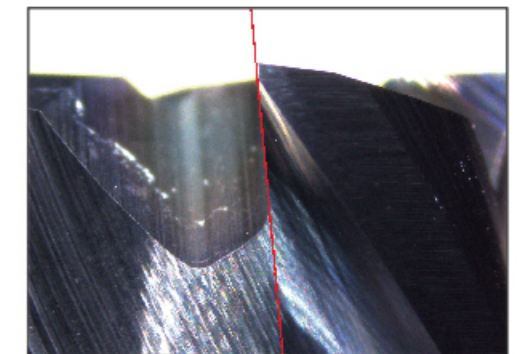
端刃第一後角
FIRST REAR ANGLE



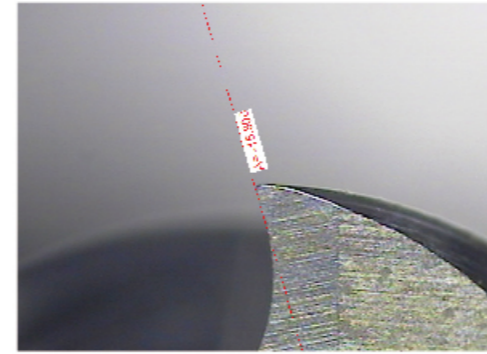
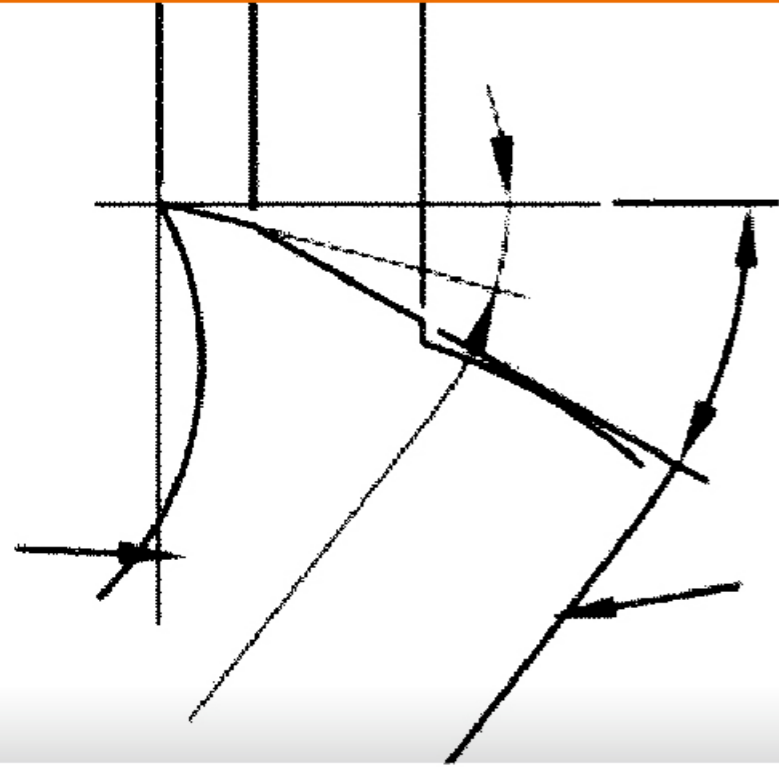
端刃第二後角
SECOND REAR ANGLE



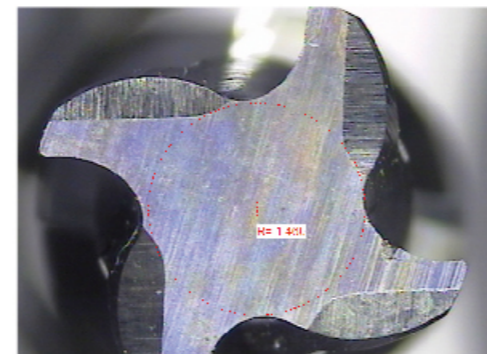
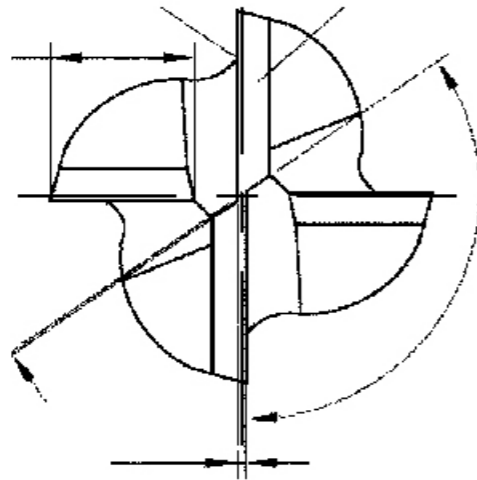
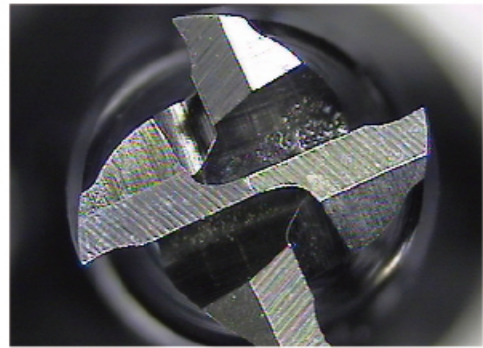
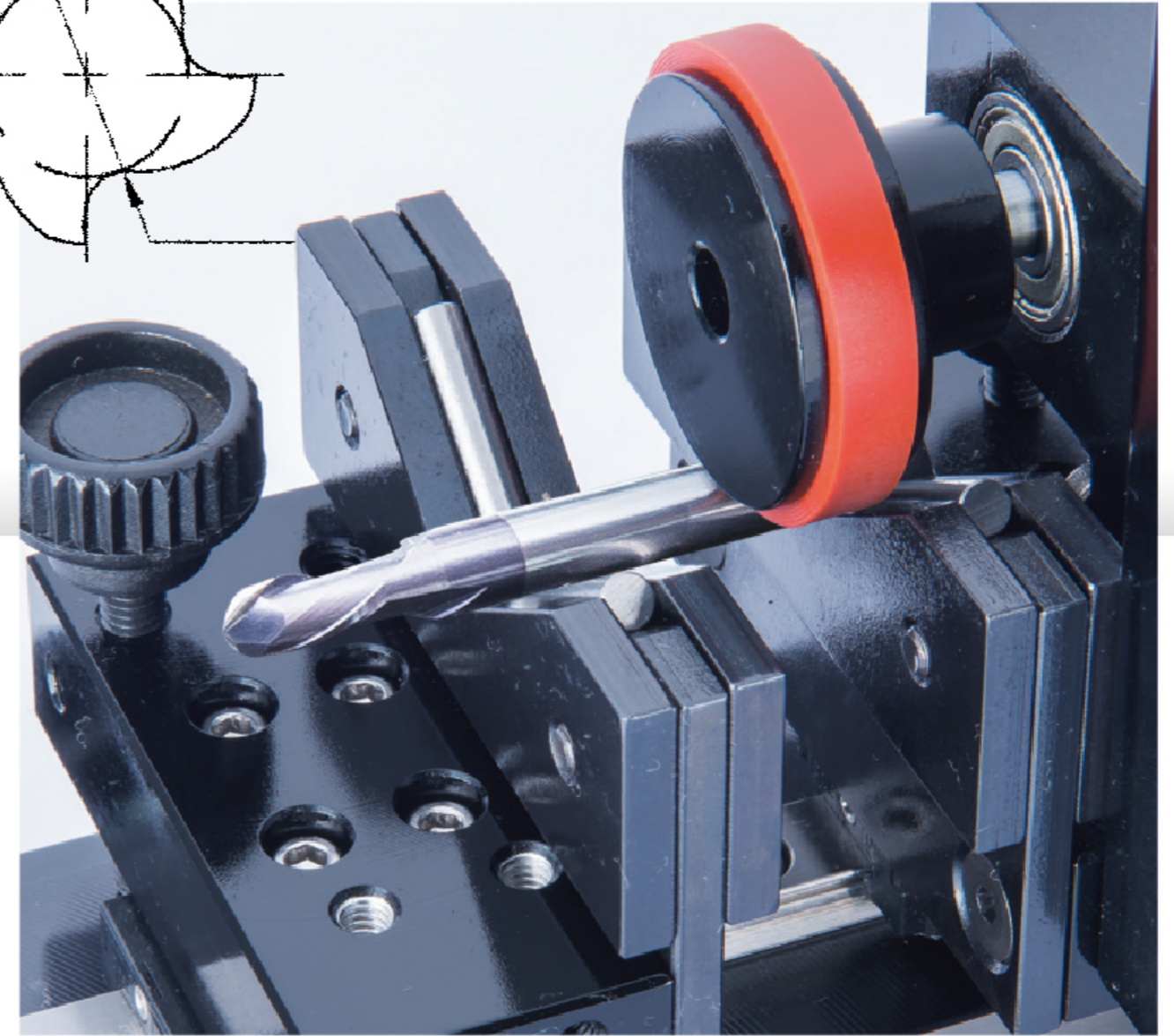
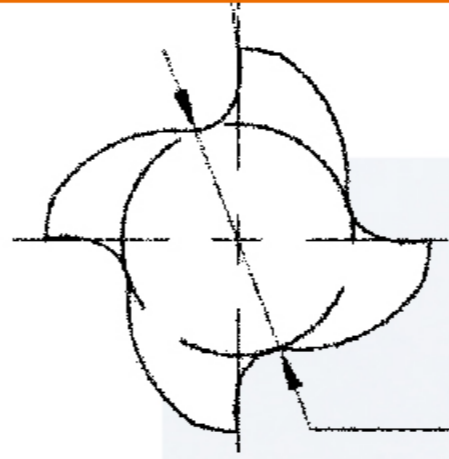
刃傾角
TILTING EDGE ANGLE



軸向前角
AXIAL FRONT ANGLE

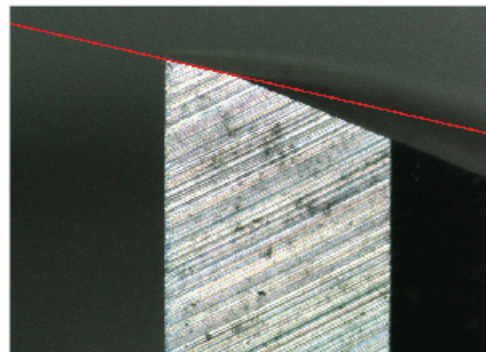


刀具端面-前角
TOOL END-FRONT ANGLE

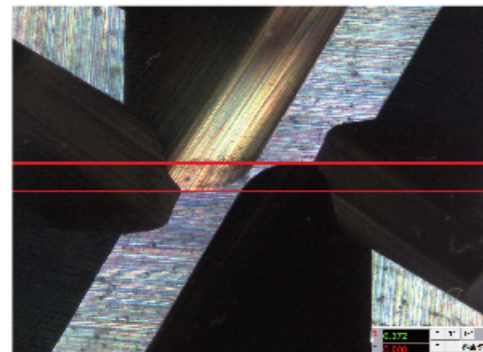


刀具端面-心徑
TOOL END-CENTER SHAFT

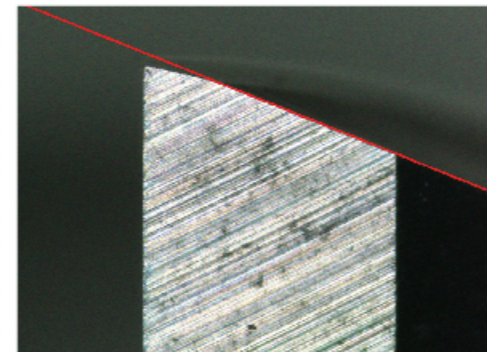
刀具端面
TOOL END



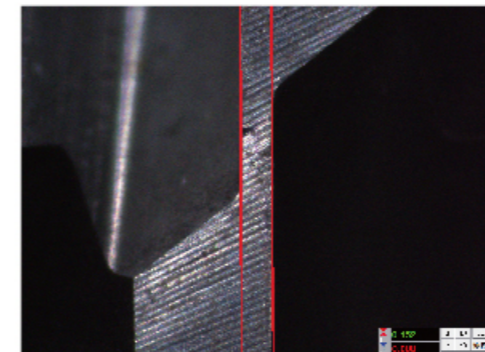
端面第一後角
FIRST REAR ANGLE



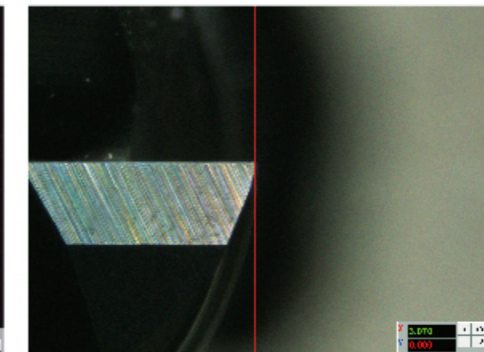
底刃寬
BOTTOM EDGE WIDTH



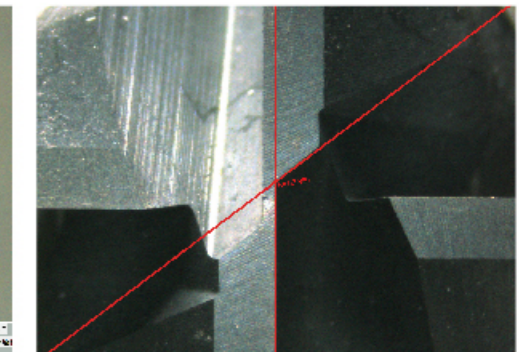
端面第二後角
SECOND REAR ANGLE



底刃寬
BOTTOM EDGE WIDTH



短刃刃長
SHORT EDGE LENGTH



底刃夾角
ANGLE OF EDGE BOTTOM

KJ-102A *PLUS* / KJ-102A SPECIFICATION

型式 / 規格	MODEL	KJ-102A <i>PLUS</i>	KJ-102A
CNC模式 (線性馬達)	CNC Model (Linear Motor)	●	N/A
量測刃長	Edge Length of Measurement	100 mm	100 mm
刀具外徑	Tool Outside Diameter	ø3 ~ ø32	ø3 ~ ø32
刀具柄長	Tool Shank Length	100 mm	100 mm
最小讀數	Least Reading Unit	1μm	1μm
螢幕	Screen	24"	24"
表光 / 背光	Surface Light / Back Light	●	●
PC軟體	PC Software	●	●
端面組	Tool Edge Measuring Device	N/A	○
鏡頭35x ~ 200x	Lens 35x ~ 200	●	●
12x鏡頭35x ~ 350x	12 x Lens 35x ~ 350x	○	○
輔助鏡	Auxiliary Lens	○	○
雙螢幕模式	Twin Screen Mode	○	N/A

PS: 側固式刀具不適用
PS: Not suitable for side fixing tool

○: 選購配備/Optional

PS: 側固式刀具不適用
PS: Not suitable for side fixing tool

●: 標準配備/Standard
N/A: 無法選購/Not available

