

適用各種刀具檢測及圖像分析

適用於雕刻刀、球刀、圓鼻刀、絞刀及一般銑刀的輪廓、角度、圓弧的檢測及圖像分析

KJ-1000A PLUS

High position accuracy 高定位精度

自動刀具量測步驟

Automatic Tool Image Inspection System

進入DXF檔案畫面

Enter Into
the Display of DXF File

自動指定路徑

Automatically
Designate Path

X/Y軸自動弧取刀具輪廓

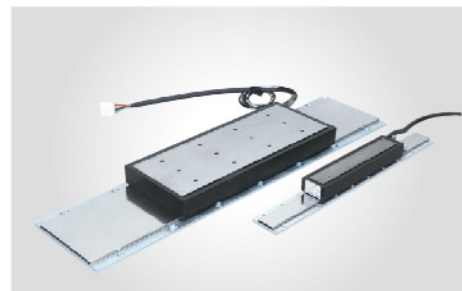
X / Y axis Automatically
Define Tool Contour

按「執行」鍵即可自動量測刀具

Press the " exec " key
to automatically
Conduct tool Measurement

Suitable for Tool Inspection and Image Analysis

Designed for inspecting contour, angle and radius and analyzing image for various tools, such as engraving tools, ball end mills, corner radius mills and general milling cutters.



X/Y軸
線性馬達驅動
X/Y軸採用線性馬達驅動
，動作快速，定位精準。

X / Y axis Linear Motor Drive

X / Y axis are driven by linear servo motors providing fast motions and high positioning accuracy.

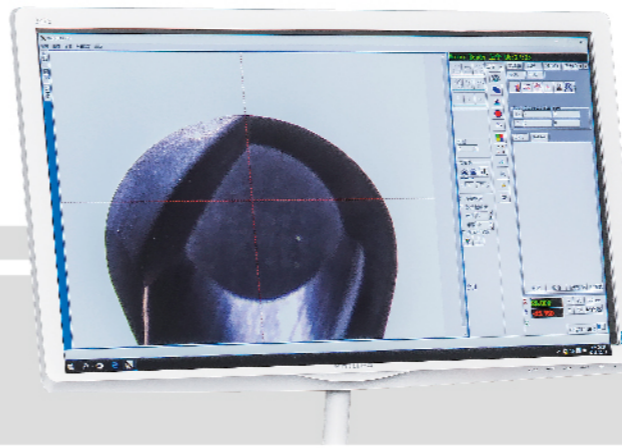


主軸結構
採用NSK高精密
斜角滾柱軸承

Spindle Construction

The spindle rotates in NSK high precision angular contact roller bearings.





操作界面 清晰易懂

簡單易懂易學的軟體操作界面設計，使用者只需輕觸按鍵，就可執行快速、簡易的刀具量測及報表。

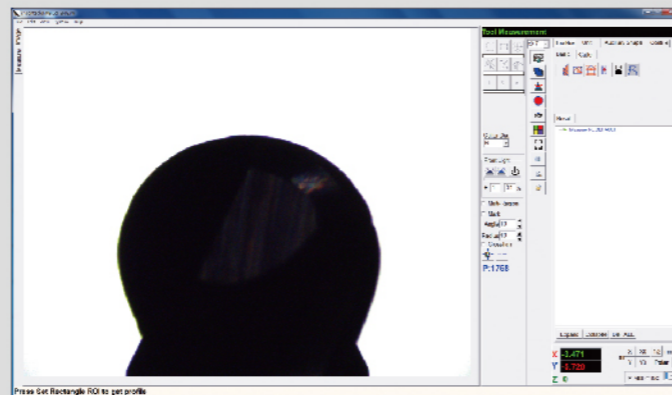
自動化刀刃量測

自動擷取影像，讓刀具量測更快速、精準。

Measuring Report

Measure No	DEFULT	Lot No	Operator
Object No		Object Name	
Measure Data		Comment	
Make Date			
Image			
LINE	REF:11		
FL1	Length:0.721		
FL2	Length:0.762		
VV1	Distance:0.559		
FL3	Length:0.905		
FL4	Length:0.766		
VV2	Distance:0.519		
CR1	R=0.041		
CR2	R=0.767		

尺寸表品檢報表
Size Inspection Report Form

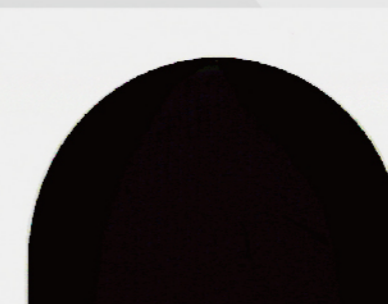


影像記憶 (開始)
Image Memory (Start)

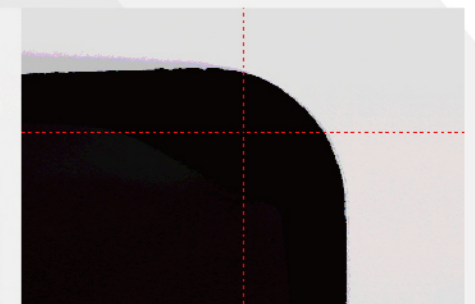
Measuring Report

Measure No	DEFULT	Lot No	Operator
Object No		Object Name	
Measure Data		Comment	
Make Date			
Image			
LINE			
MAX R	2.000		
MIN R	2.505		
MAX D	2.495		
MIN D	10.000		
MIN RA	1.0 201		

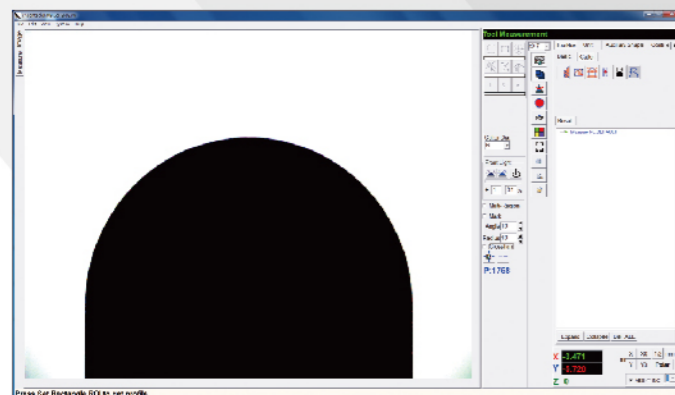
球頭刀報表
Report Form For Ball End Mill



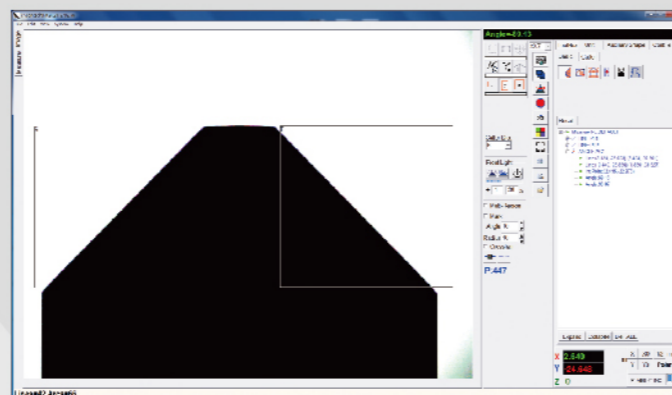
球頭刀
Ball End Mill



圓鼻刀
Corner Radius Mill



影像記憶 (完成)
Image Memory (Finish)

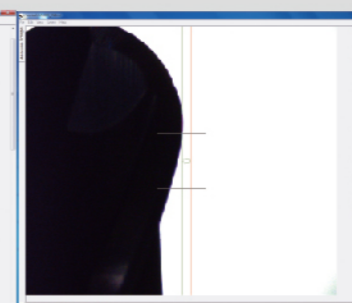


角度量測
Angle measurement

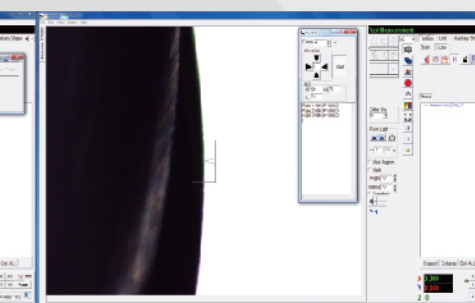
Measuring Report

Measure No	DEFULT	Lot No	Operator
Object No		Object Name	
Measure Data		Comment	
Make Date			
Image			
LINE			
MAX R	1.000		
MIN R	2.000		
MAX D	1.997		
MIN D	7.507		
MIN RA	17.270		

圓鼻刀報表
Report Form For Corner Radius Mill



刃徑
Edge Diameter



刃跳動
Edge Runout

Easy-to-understand Operational Interface

Simple and easy-to-understand operational interface. The operator only needs to press keys for fast and easily executing tool measurement and report forms.

Automatic Cutter Edge Measurement

Automatically defining image makes tool measurement faster and more accurate.





機械特性：

- 六軸機械手臂
- 雙夾爪
- 後拉式油壓刀把D3-12 mm

FEATURES:

- 6 axis robot
- Twin grippers
- Back pulling type hydraulic tool shank D3-12 mm

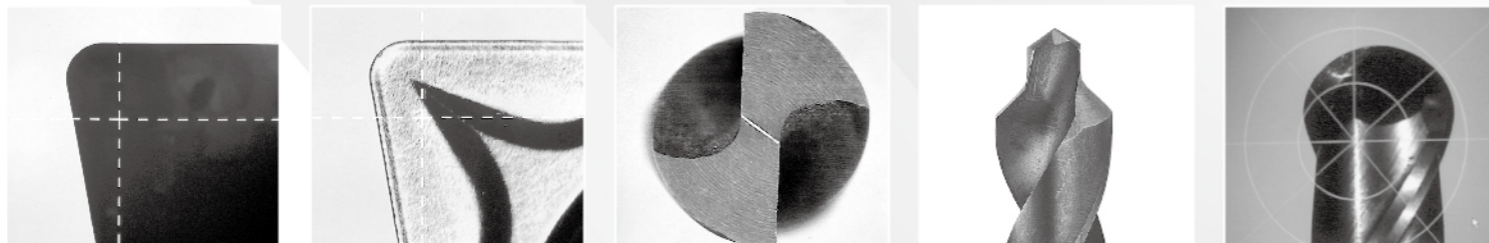
技術參數	範圍	載重	盤數	高	長	深
Technical Specifications	Range 700 mm	Payload 5 kg	Number of trays 3	Height 2 m	Length 1.5 m	Depth 1mm

適用各種刀具檢測及圖像分析

適用於雕刻刀、球刀、圓鼻刀、絞刀及一般銑刀的輪廓、角度、圓弧的檢測及圖像分析

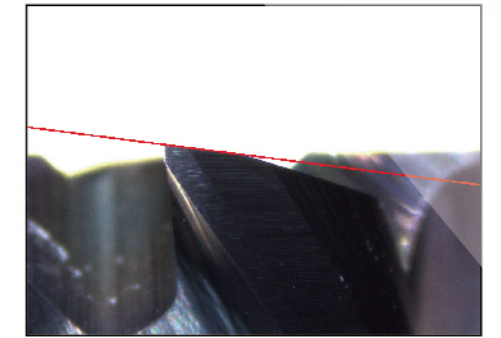
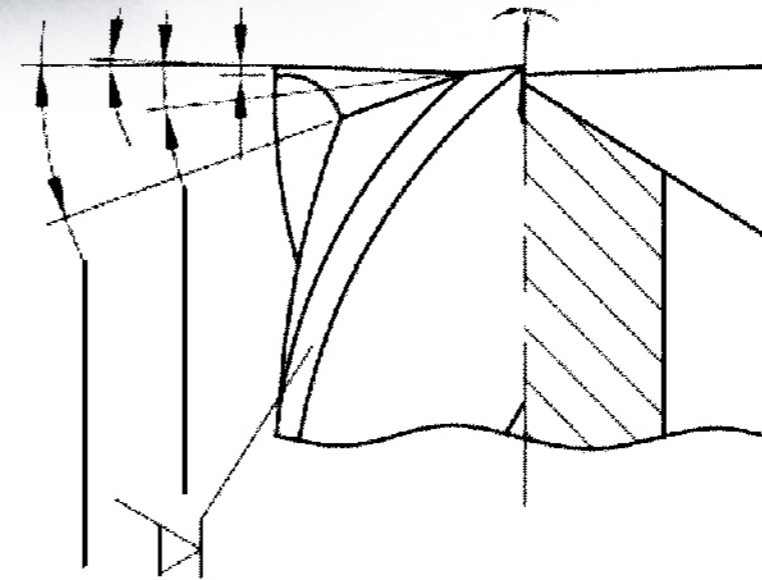
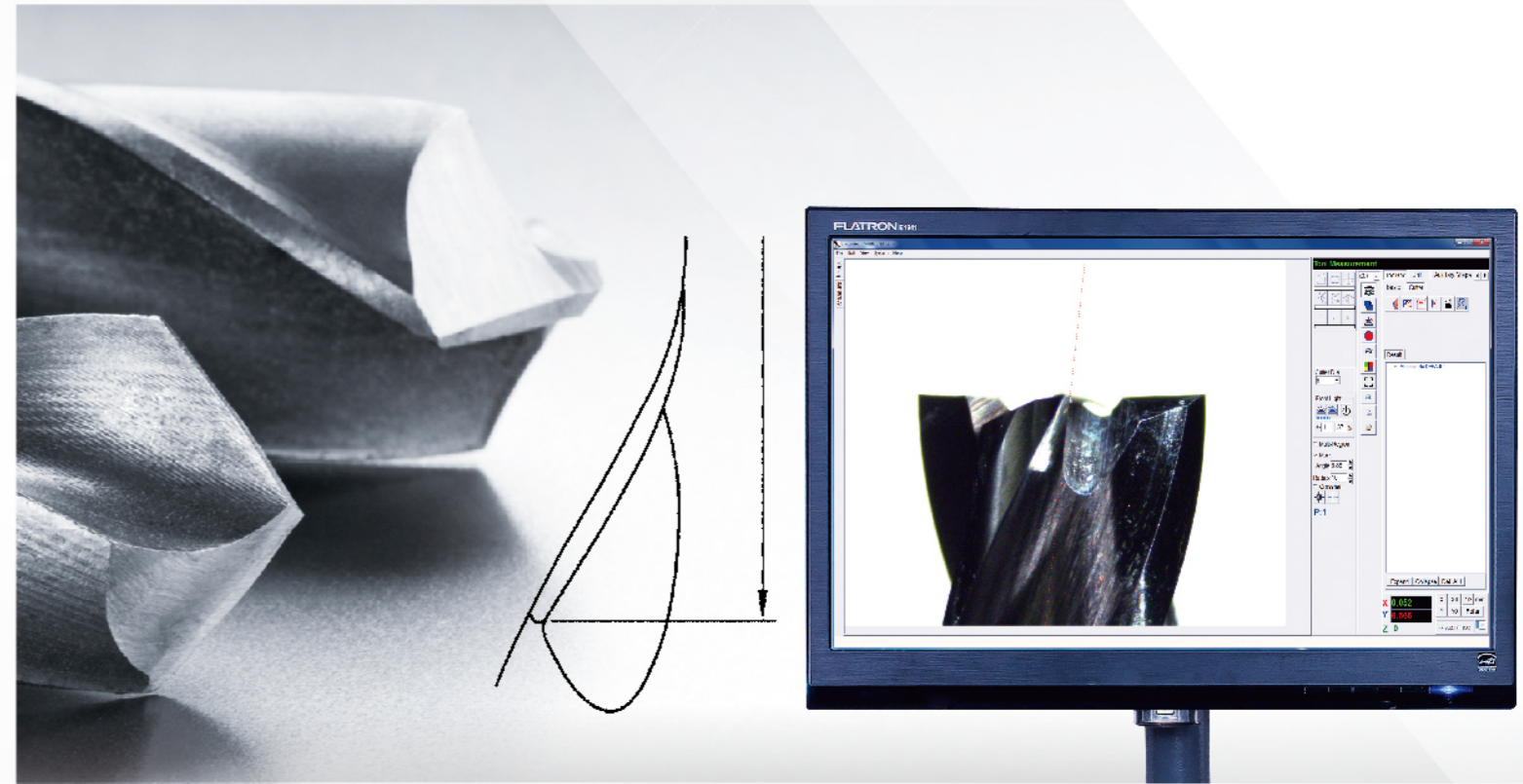
Suitable for Tool Inspection and Image Analysis

Designed for inspecting contour, angle and radius and analyzing image for various tools, such as engraving tools, ball end mills, corner radius mills and general milling cutters.





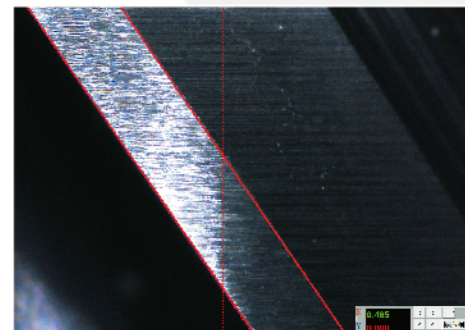
KJ-1000A



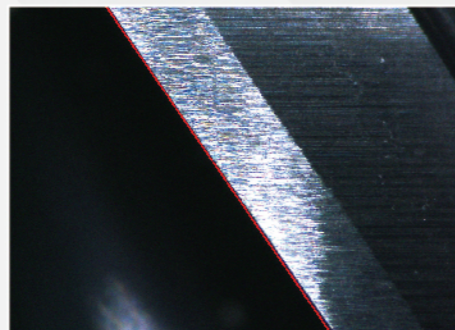
端刃第一後角
First Rear Angle

表面及周長量測

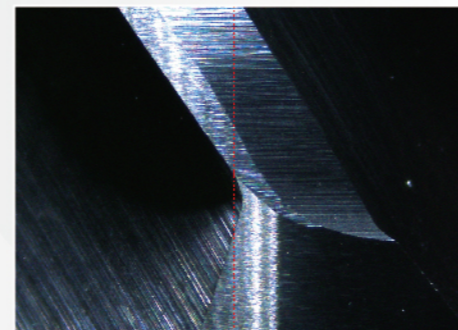
特殊設計的軟體功能，也可適用於量測幾何形狀之表面及周長。



刃寬
Edge Width



螺旋角
Helix Angle



刃長
Edge Length

Surface and Circumference Length Measurement

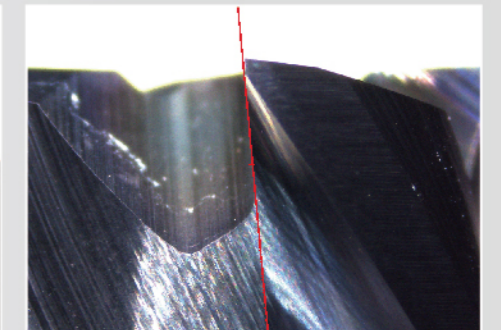
With the specially designed software function, the geometric shapes such as surface and circumference length can be measured.



端刃第二後角
Second Rear Angle

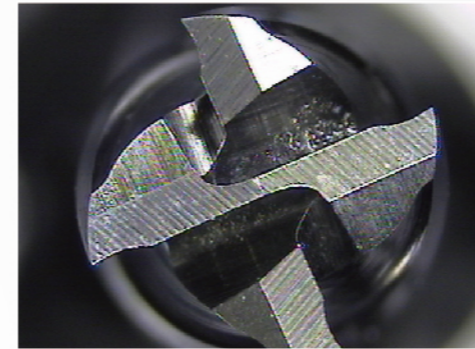


刃傾角
Tilting Edge Angle

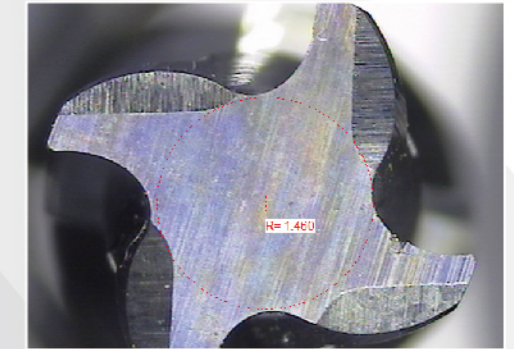
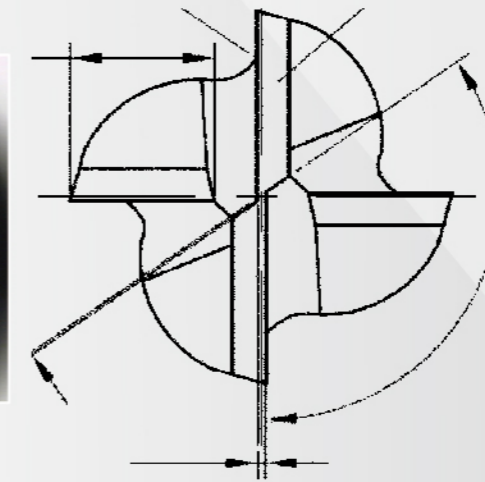


軸向前角
Axial Front Angle

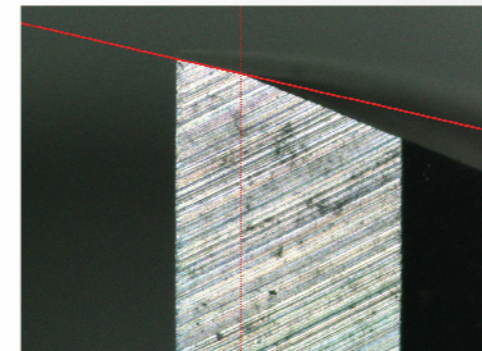
一次性裝夾量測效率更高
High Measuring Efficiency
with Only a Single Setup of Tool



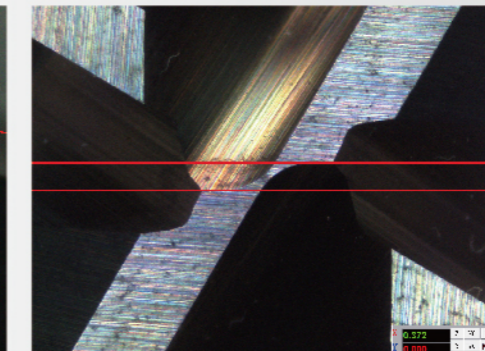
刀具端面
Tool End



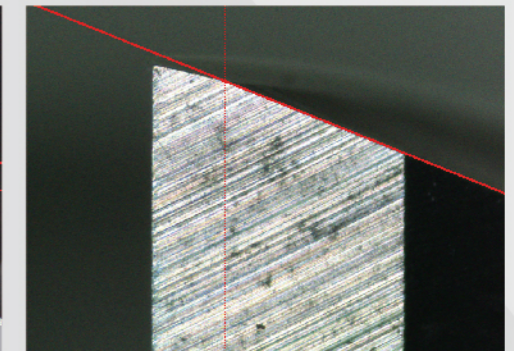
刀具端面-心徑
Tool End-center Shaft



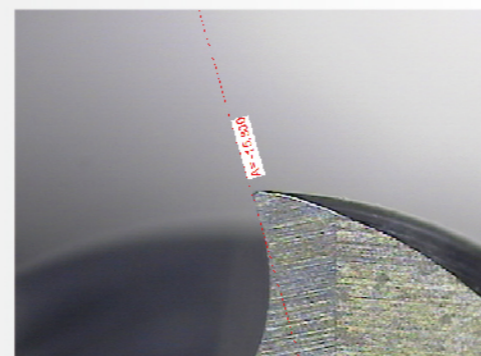
端面第一後角
First Rear Angle



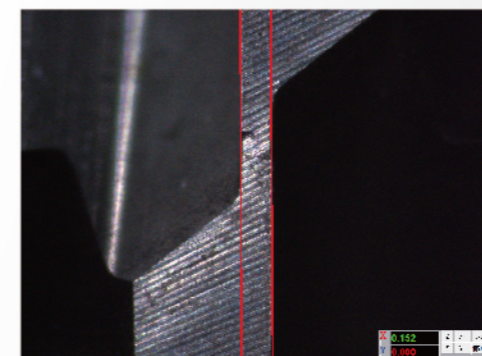
底刃寬
Bottom Edge Width



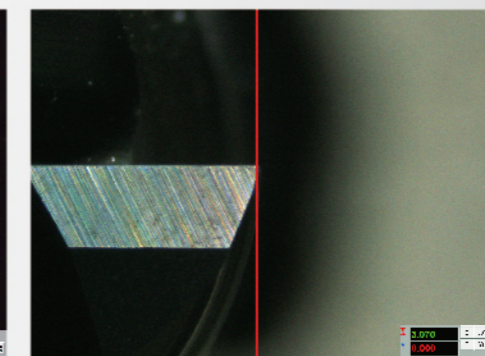
端面第二後角
Second Rear Angle



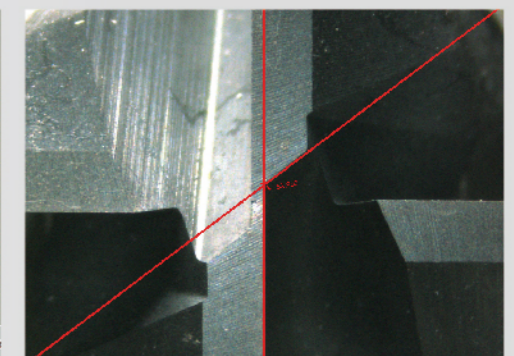
刀具端面-前角
Tool End-front Angle



底刃寬
Bottom Edge Width



短刃刃長
Short edge length



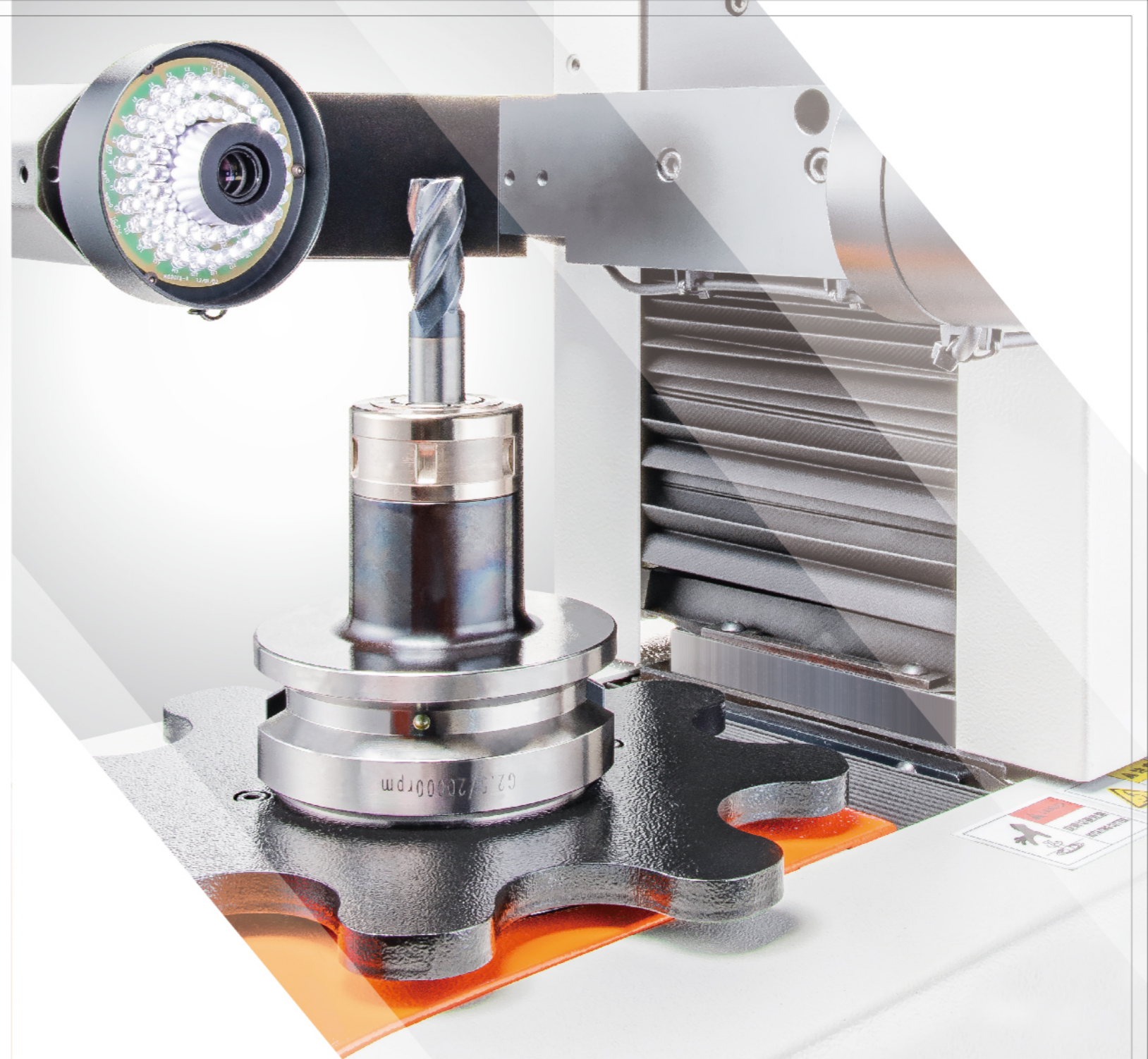
底刃夾角
Angle Of Edge Bottom

KJ-1000A 上鏡頭模組 (選配)
Top Lens Model (Optional)

KJ-1000A PLUS / KJ-1000A SPECIFICATION

技術資料 Tec Inf	型式	MODEL	全自動 / AUTO		半自動 / MANUAL	
			KJ-1000A PLUS(340)	KJ-1000A PLUS(560)	KJ-1000A(340)	KJ-1000A(560)
驅動模式 Drive Mode	CNC模式(線性馬達)	CNC Model(Linear Motor)	●	●	無法選配 Not Optional	無法選配 Not Optional
	手動軸向調整(含微調)	Fine Adjustment	●	●	●	●
	C軸自動旋轉與角度顯示(ROD)	C axis Spindle Auto Drive	●	●	◎	◎
有效行程 Axis Travel	水平軸	X axis	D: 130 mm	D: 230 mm	D: 130 mm	D: 230 mm
	垂直軸	Z axis	L: 60 ~ 400 mm	L: 60 ~ 600 mm	L: 60 ~ 400 mm	L: 60 ~ 600 mm
	過中心量測(20mm)	Snape(20 mm)	●	●	●	●
基礎參數 Basic Parameters	倍率	Scale	35x ~ 200x	35x ~ 200x	35x ~ 200x	35x ~ 200x
	ISO50鑽孔	Spindle ISO50	●	●	●	●
	解析度	Resolution	1μ	1μ	1μ	1μ
	CMOS相機	CMOS Camera	●	●	●	●
	表面光源	Front Light	●	●	●	●
	24吋螢幕	24" Screen	●	●	●	●
	刀具邊緣追蹤	Edge Finder	●	●	●	●
	1000A 控制系統	1000A Control System	●	●	●	●
	PC電腦(W10)	PC Computer(W10)	●	●	●	●
	選擇配件 Optional	套筒	Sleeve	◎	◎	◎
主軸真空鎖刀		Tool Clamping(Vacuum)	◎	◎	◎	◎
上鏡頭組		Top Lens	無法選配 Not Optional	無法選配 Not Optional	◎	◎
高倍率鏡頭(25x~350x)		Scales(25x~350x)	◎	◎	◎	◎
控制需求 Control Needs	放大輔助鏡	Attachments	◎	◎	◎	◎
	電源	Power	110V or 220V	110V or 220V	110V or 220V	110V or 220V
	安培數	Ampere	10A	10A	2A	2A
	氣壓源	Air	5~7 Mpa (70~100 PSI)		5~7 Mpa (70~100 PSI)	
尺寸 Size	重量	Weight	320 kg	340 kg	300 kg	320 kg
	長	Length	1200 mm	1200 mm	1200 mm	1200 mm
	深	Width	750 mm	750 mm	750 mm	750 mm
	高	Height	1700 mm	1900 mm	1700 mm	1900 mm

◎:選購配備/Optional ●:標準配備/Standard



KJ KEEJAAN

KJ-1000A 系列

KJ KEEJAAN

可展機械股份有限公司
KEE JAAN MACHINERY CO., LTD.

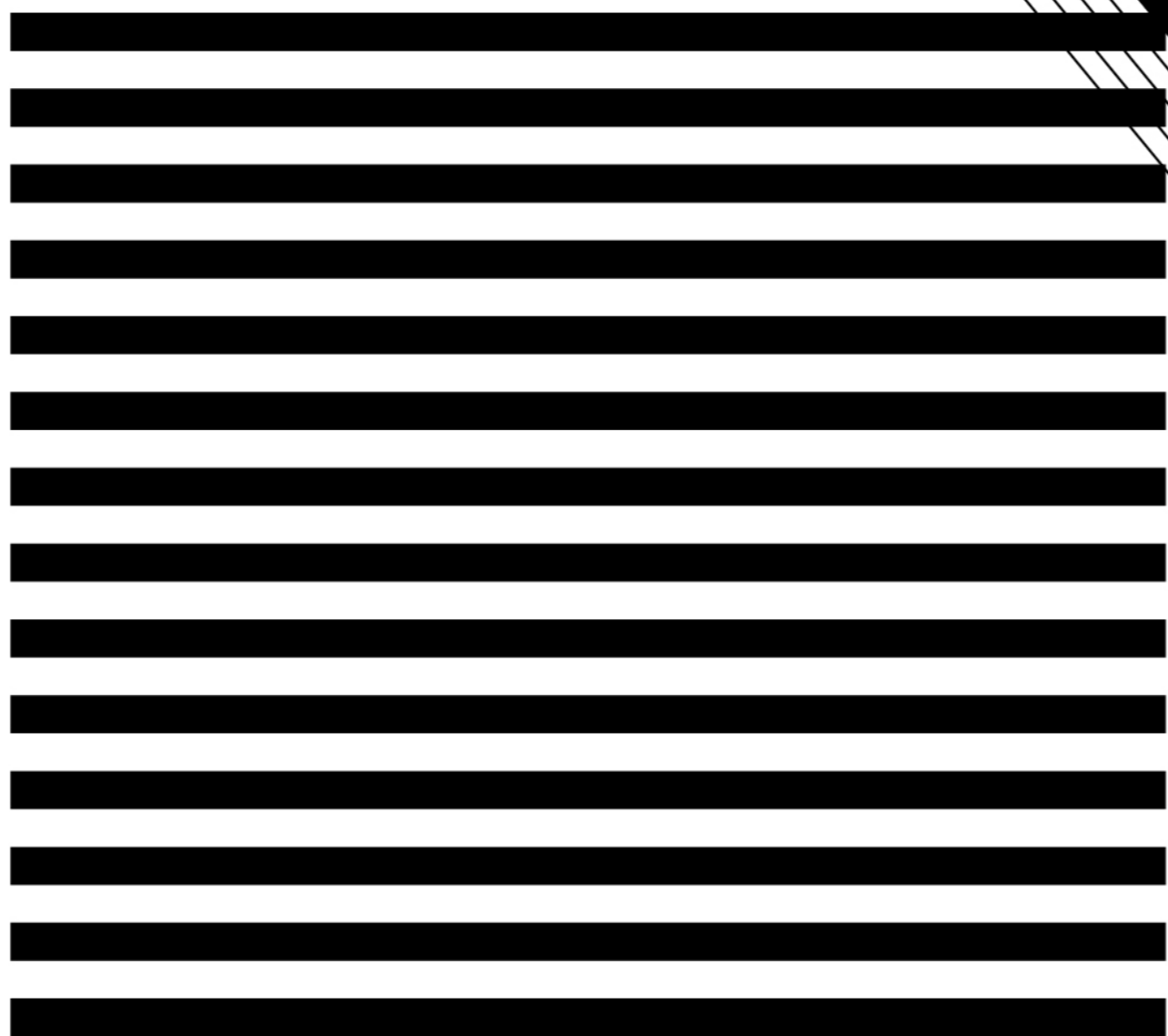
420 台中市豐原區豐原大道五段216巷20號
No. 20, Ln. 216, Sec. 5, Fengyuan Blvd., Fengyuan Dist., Taichung City 420, Taiwan
TEL: +886-4-25381409、25380514 FAX: +886-4-25364523
http://www.keejaan.com E-mail: keejaan@ms47.hinet.net

AUTOMATIC TOOL IMAGE INSPECTION SYSTEM
自動刀具影像量測儀

TOOL IMAGE INSPECTION SYSTEM
刀具影像量測儀

www.keejaan.com





KJ KEEJAAN

可展機械股份有限公司
KEE JAAN MACHINERY CO., LTD.

KJ KEEJAAN
KJ-1000A 系列

www.keejaan.com